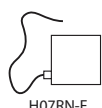




A modern surface wall mounted luminaire with LED source.
It is ideal for home facade lighting and it is available with one or two-way light distribution.

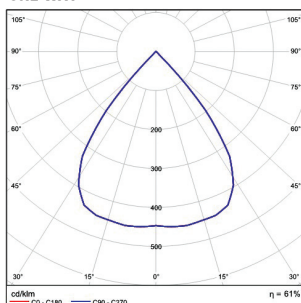
Technical Features

- Aluminium body, painted electrostatically in selected colour.
- Die-cast aluminium mounting base.
- Beam distribution glass lens.
- Pure light without IR/UV radiation.
- Operation life: 50,000 hours with efficiency > 80% of the initial luminous flux (L80B10).

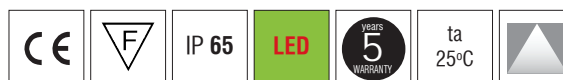
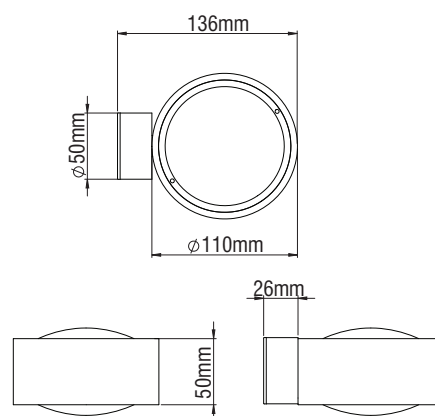
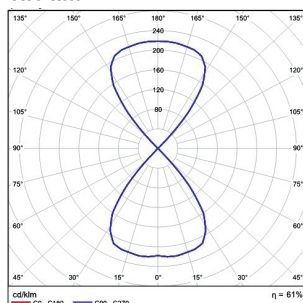


To ensure the degree of protection (sealing), the use of flexible power supply cable type H07RN-F (in appropriate diameter) is required.

ONE WAY



TWO WAY



- Beams: Diffuser.
- Aluminium body.
- Glass lens.
- CRI: min. 80 / SCDM: 3
- Dimmer phase cut.
- Luminous Efficacy:
4W: 4000K 122 Lm/Watt
4W: 3000K 115 Lm/Watt

Code	Description	Kg
85842	AVIA ONE WAY 1x4W	1,000
85843	AVIA TWO WAY 2x4W	1,000

LED COLOUR CODES:

2 Warm 3 Neutral

Beams Codes:

00 Diffuser

Colour Codes:

0 Colours 1 White 2 Titan 3 Black 4 Chrome 5 matt Alum.

