

*EASYLINE APPLIQUE combines the architectural style with the efficiency.  
It produces perfect lighting conditions without annoying reflections and that is why it can be used from entrance areas to offices.  
The visual benefit: The continuous-row system is illuminated absolutely uniformly from beginning to end,  
is economically efficient, is maintenance-free and it has long service life.*

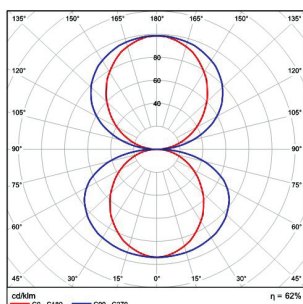
## Technical Features

- Housing from aluminium profile, painted electrostatically in selected colour.
- PMMA diffuser in opal.
- Removable plastic heads.
- Pure light without IR/UV radiation.
- Efficient thermal management.
- Up to 28W/m and 5000 Lm luminous flux range.
- Operation life: 50,000 hours with efficiency > 80% of the initial luminous flux (L80B10).
- Connection for operation on 230V/50Hz.

## Upon request

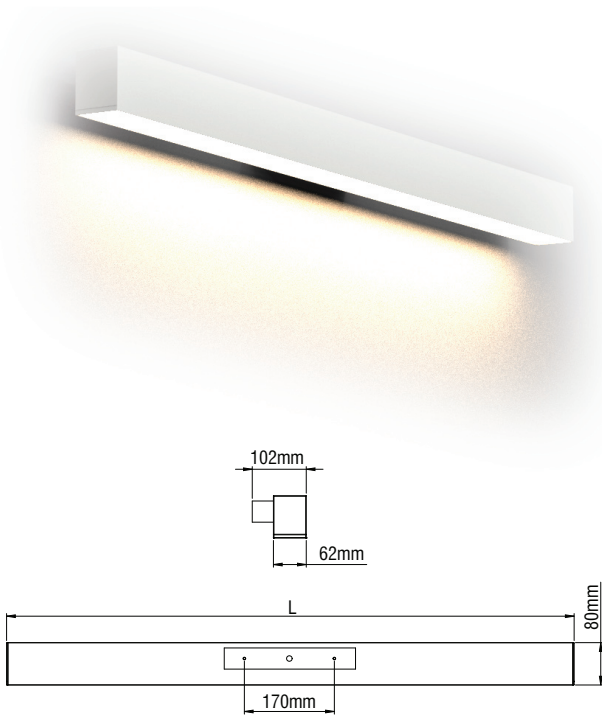
- Connection for emergency lighting system, for one or three hours.
- Microprismatic or anaglyph diffuser.
- Available with higher colour rendering index (CRI).

**EASYLINE APPLIQUE UP/ DOWN**

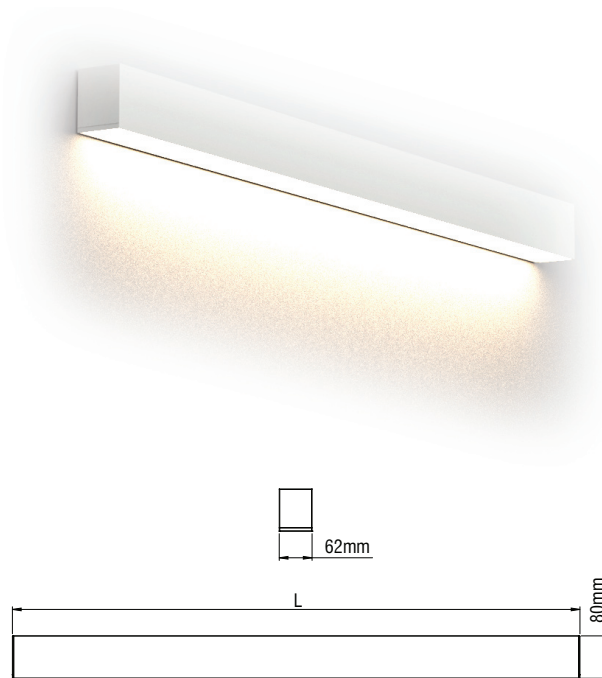


# EASYLINE APPLIQUE

## EASYLINE APPLIQUE



## EASYLINE SURFACE APPLIQUE



# WALL LIGHTING INTERIOR

CE

F

IP 40

IK 03

LED

5 YEARS WARRANTY

ta 25°C

Included

- Aluminium body.
- Removable plastic heads.
- High efficient diffuser in opal PMMA.
- CRI: min. 80 / SDCM: 3
- Luminous Efficacy:  
209 Lumen / Watt (4000K) at 225mA  
197 Lumen / Watt (3000K) at 225mA

Code	Description	L	Kg
99060	Easyline Led Applique 10W	590	2,000
99061	Easyline Led Applique 15W	870	2,900
99062	Easyline Led Applique 20W	1150	4,000
99063	Easyline Led Applique 25W	1430	5,000

For dimmer version add letter “D” at the end of product code.

CE

F

IP 40

IK 03

LED

5 YEARS WARRANTY

ta 25°C

Included

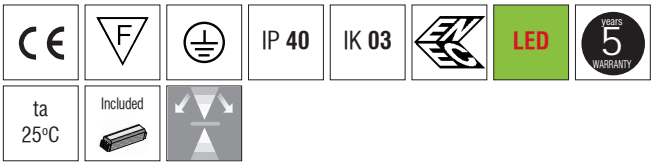
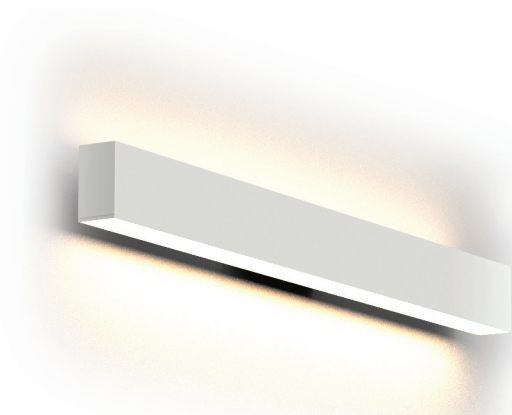
- Aluminium body.
- Removable plastic heads.
- High efficient diffuser in opal PMMA.
- CRI: min. 80 / SDCM: 3
- Luminous Efficacy:  
209 Lumen / Watt (4000K) at 225mA  
197 Lumen / Watt (3000K) at 225mA

Code	Description	L	Kg
99070	Easyline Led Surface Applique 10W	590	2,000
99071	Easyline Led Surface Applique 15W	870	2,900
99072	Easyline Led Surface Applique 20W	1150	4,000
99073	Easyline Led Surface Applique 25W	1430	5,000

For dimmer version add letter “D” at the end of product code.

# EASYLINE APPLIQUE

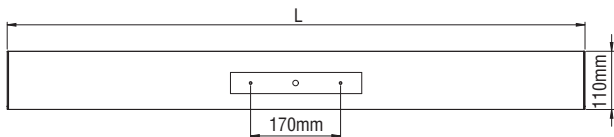
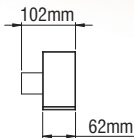
## EASYLINE APPLIQUE UP/ DOWN



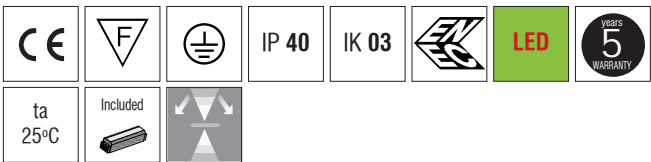
- Aluminium body.
- Removable plastic heads.
- High efficient diffuser in opal PMMA.
- CRI: min. 80 / SDCM: 3
- Luminous Efficacy:  
209 Lumen / Watt (4000K) at 225mA  
197 Lumen / Watt (3000K) at 225mA

Code	Description	L	Kg
99040	Easyline Led Applique Up/ Down 10W+10W	590	2,100
99041	Easyline Led Applique Up/ Down 15W+15W	870	3,100
99042	Easyline Led Applique Up/ Down 20W+20W	1150	4,200
99043	Easyline Led Applique Up/ Down 25W+25W	1430	5,300

For dimmer version add letter “D” at the end of product code (not possible at L590mm)



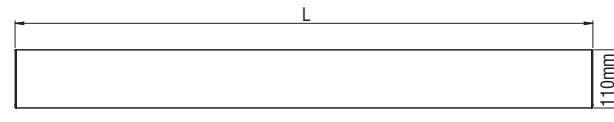
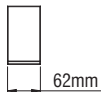
## EASYLINE SURFACE APPLIQUE UP/ DOWN



- Aluminium body.
- Removable plastic heads.
- High efficient diffuser in opal PMMA.
- CRI: min. 80 / SDCM: 3
- Luminous Efficacy:  
209 Lumen / Watt (4000K) at 225mA  
197 Lumen / Watt (3000K) at 225mA

Code	Description	L	Kg
99050	Easyline Led Surface Applique Up/ Down 10W+10W	590	2,100
99051	Easyline Led Surface Applique Up/ Down 15W+15W	870	3,100
99052	Easyline Led Surface Applique Up/ Down 20W+20W	1150	4,200
99053	Easyline Led Surface Applique Up/ Down 25W+25W	1430	5,300

For dimmer version add letter “D” at the end of product code (not possible at L590mm)



<b>Led Colour:</b> <b>2</b> Warm <b>3</b> Neutral	<b>Colour Codes:</b> <b>0</b> Colours <b>1</b> White <b>2</b> Titan <b>3</b> Black <b>9</b> Anod.
--	--



EASYLINE APPLIQUE

WALL LIGHTING INTERIOR

