**Technical Features**

- Steel body with flat form, electrostatically painted in white colour.
- $UGR \leq 19$  for 2M Louvre versions.
- High efficient opal PMMA for plexi version and aluminium louvre with high efficient satin PMMA cover for louvre version.
- Last generation high efficient LED CHIP.
- Pure light without IR/UV radiation.
- Connection for operation on 230V-50/60Hz.

**High Efficiency**

- Operation life: 50,000 hours with efficiency  $> 80\%$  of the initial luminous flux (L80B10).

**High Output**

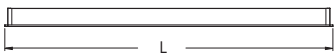
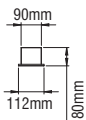
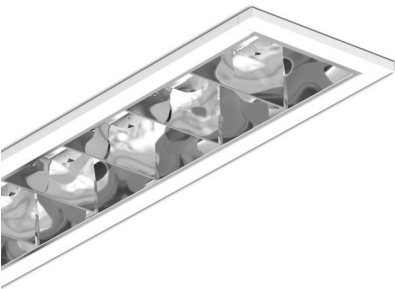
- Operation life: 50,000 hours with efficiency  $> 80\%$  of the initial luminous flux (L80B50).

**Upon request:**

- Body and accessories in various colours (RAL)
- Connection for emergency lighting system, for one or three hours.

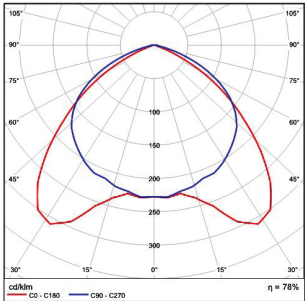
# L 100

## L100 2M LED



14W/19W = 594mm  
20W/28W = 894mm  
25W/36W = 1194mm  
31W/44W = 1494mm

Holes: 95 x L-20mm



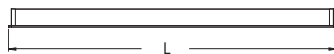
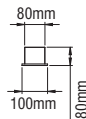
- Steel body.
- Aluminium louvre with high efficient satin PMMA cover for led source.
- CRI: min. 80 / SDCM: 3
- Luminous Efficacy: High Efficiency - 206 Lm/W 4000K  
195 Lm/W 3000K  
High Output - 201 Lm/W 4000K  
189 Lm/W 3000K

Code	Description (High Efficiency 250mA)
372503	L101 2M LED 14W Warm
372513	L101 2M LED 14W Neutral
372543	L101 2M LED 20W Warm
372553	L101 2M LED 20W Neutral
372583	L101 2M LED 25W Warm
372593	L101 2M LED 25W Neutral
372623	L101 2M LED 31W Warm
372633	L101 2M LED 31W Neutral

Code	Description (High Output 350mA)
372523	L101 2M LED 19W Warm
372533	L101 2M LED 19W Neutral
372563	L101 2M LED 28W Warm
372573	L101 2M LED 28W Neutral
372603	L101 2M LED 36W Warm
372613	L101 2M LED 36W Neutral
372643	L101 2M LED 44W Warm
372653	L101 2M LED 44W Neutral

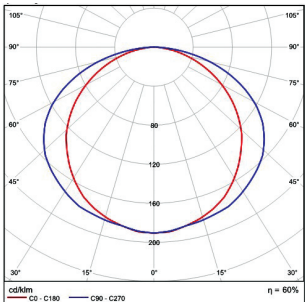
For dimmer version add letter "D" at the end of product code.

## L100 PLEXI LED



14W/19W = 594mm  
20W/28W = 894mm  
25W/36W = 1194mm  
31W/44W = 1494mm

Holes: 85 x L-20mm



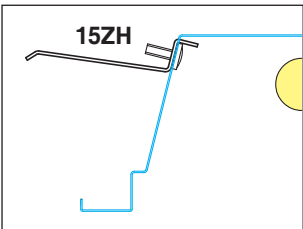
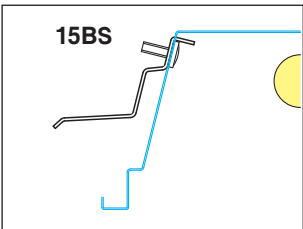
- Steel body.
- High efficient opal PMMA.
- CRI: min. 80 / SDCM: 3
- Luminous Efficacy: High Efficiency - 206 Lm/W 4000K  
195 LM/W 3000K  
High Output - 201 Lm/W 4000K  
189 LM/W 3000K

Code	Description (High Efficiency 250mA)
373503	L101 Plexi LED 14W Warm
373513	L101 Plexi LED 14W Neutral
373543	L101 Plexi LED 20W Warm
373553	L101 Plexi LED 20W Neutral
373583	L101 Plexi LED 25W Warm
373593	L101 Plexi LED 25W Neutral
373623	L101 Plexi LED 31W Warm
373633	L101 Plexi LED 31W Neutral

Code	Description (High Output 350mA)
373523	L101 Plexi LED 19W Warm
373533	L101 Plexi LED 19W Neutral
373563	L101 Plexi LED 28W Warm
373573	L101 Plexi LED 28W Neutral
373603	L101 Plexi LED 36W Warm
373613	L101 Plexi LED 36W Neutral
373643	L101 Plexi LED 44W Warm
373653	L101 Plexi LED 44W Neutral

For dimmer version add letter "D" at the end of product code.

## SUSPENSION BRACKETS



- Suspension brackets from galvanized steel thickness 1,5mm, necessary for the installation in plasterboard.
- 15 BS min.18mm, max. 45mm
- 15 ZH min.45mm, max. 72mm

Code	Description
303001	15 BS (4 pieces)
303005	15 ZH (4 pieces)