

HIGH/LOW SYSTEM

PROFESSIONAL SURFACE & PENDANT LUMINAIRES



This luminaire combines the architectural style with the efficiency. It produces perfect lighting conditions without annoying reflections and that is why it can be used from entrance areas to offices. The visual benefit: The continuous-row system is illuminated absolutely uniformly from beginning to end, is economically efficient, is maintenance-free and it has long service life.

Technical Features

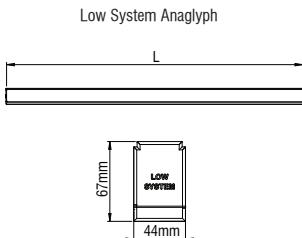
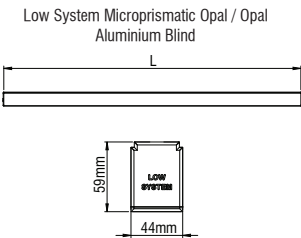
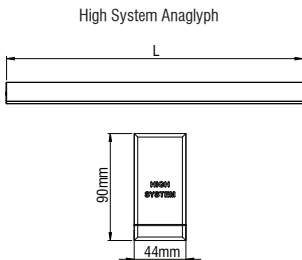
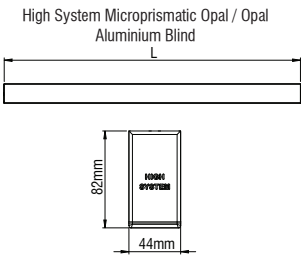
- Housing from aluminium profile, painted electrostatically in selected colour.
- Removable plastic heads.
- High efficient opal diffuser, microprismatic opal, anaglyph edition or blind aluminium cover painted.
- Pure light without IR/UV radiation.
- Efficient thermal management.
- Operation life: 50,000 hours with efficiency > 80% of the initial luminous flux (L80B10).
- Connection for operation on 230V-50/60Hz.

Upon request:

- Available with highest colour rendering index (CRI).
- Available in IP54 protection version (not possible for asymmetric version).
- Connection for emergency lighting system, for one or three hours.

HIGH/LOW SYSTEM

PROFESSIONAL SURFACE & PENDANT LUMINAIRES



Length:

- 01 L: meter (custom)
- 02 L: 574mm
- 03 L: 854mm
- 04 L: 1134mm
- 05 L: 1414mm

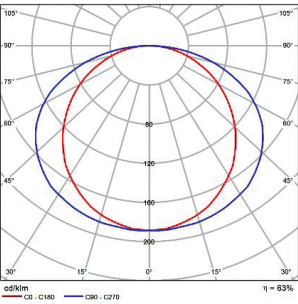
- 06 L: 1694mm
- 07 L: 1974mm
- 08 L: 2254mm
- 09 L: 2538mm
- 10 L: 2818mm



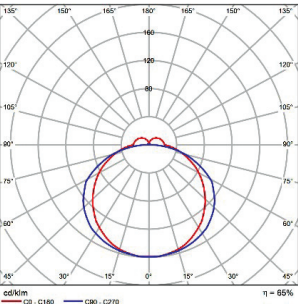
- Body from extruded aluminium profile.
- High efficient opal diffuser, opal microprismatic, anaglyph edition or blind aluminium cover painted.
- Plastic end cap without screws.
- ENEC Certification for HIGH SYSTEM.

Code	Description	Kg
9051	High System Trunking Surface	1,200
9052	Low System Trunking Surface	1,000
9055	High-Low System Cover Microprismatic Opal	0,150
9056	High-Low System Cover Opal	0,100
9057	High-Low System Cover Anaglyph	0,150
905801	High-Low System Cover Aluminium Blind / meter	0,300
90591	High System End Cap (pair) Surface	0,010
90592	Low System End Cap (pair) Surface	0,010
90593	High System End Cap anaglyph (pair) Surface	0,010
90594	Low System End Cap anaglyph (pair) Surface	0,010

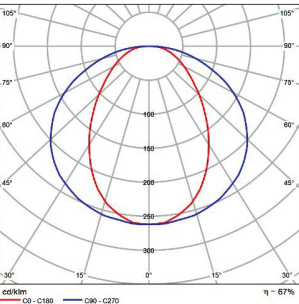
OPAL



ANAGLYPH



MICROPRISMATIC OPAL

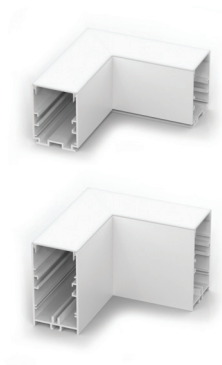


Colour Codes:

- 0 Colours
- 1 White
- 2 Titan
- 3 Black
- 5 matt Alum.

HIGH/LOW SYSTEM

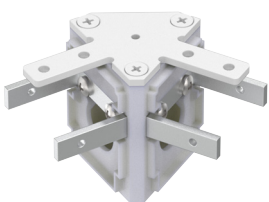
CORNER PROFILE 120x120



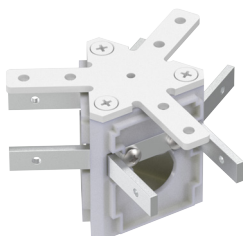
TRUNKING CONNECTORS



LOW SYSTEM CORNER 120°



LOW SYSTEM CORNER 120° DOUBLE



Colour Codes:

0 Colours 1 White 2 Titan 3 Black 5 matt Alum.

LED GEAR TRAY



Type:

1 Electronic 2 Dimmer 3 Emergency*

* Not possible at L564mm and L844mm

Additional technical details

- Easy tool less installation
- Continuous lighting lines without black spots
- Upon request: Pre-wired for standard, dali or emergency edition

Led Colour Codes:

1 Cool 2 Warm 3 Neutral

PROFESSIONAL SURFACE & PENDANT LUMINAIRES



- Body from extruded aluminium profile.
- High efficient opal diffuser, opal microprismatic, anaglyph edition or blind aluminium cover painted.

Code Description

905404	Low System corner profile surface microprismatic opal
905401	Low System corner profile surface opal
905402	Low System corner profile surface anaglyph
905403	Low System corner profile surface metal blind

905414	High System corner profile surface microprismatic opal
905411	High System corner profile surface opal
905412	High System corner profile surface anaglyph
905413	High System corner profile surface metal blind



- Aluminium Trunking Connectors.

Code Description

968255	Trunking Metal Connectors pair
--------	--------------------------------



- Body from aluminium.

Code Description

905450	Low System corner 120°
--------	------------------------

905451	Low System corner 120° double
--------	-------------------------------



- Body from extruded aluminium profile anodized.
- PMMA clear cover.
- CRI: min. 80 / SDCM: 3
- Luminous Efficacy: High efficiency: 206 Lm/Watt 4000K at 250mA
195 Lm/Watt 3000K at 250mA
High output : 201 Lm/Watt 4000K at 350mA
189 Lm/Watt 3000K at 350mA
Maximum output: 189 Lm/Watt 4000K at 550mA
178 Lm/Watt 3000K at 550mA

Code Description

90514	High-Low System Led Gear Tray
-------	-------------------------------

Length - Watt:

High Efficiency

01	L 564-10W
02	L 844-15W
03	L1124-20W
04	L1404-25W
05	L1684-30W
06	L1964-35W
07	L2244-40W

High Output

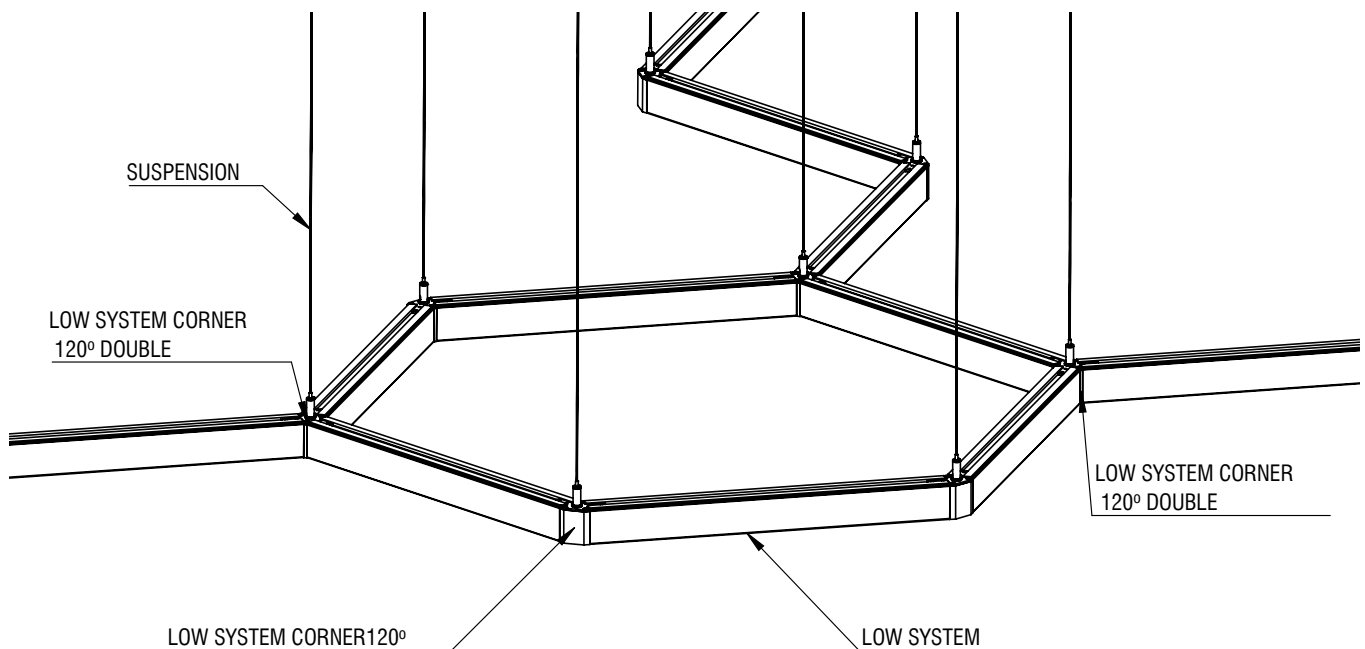
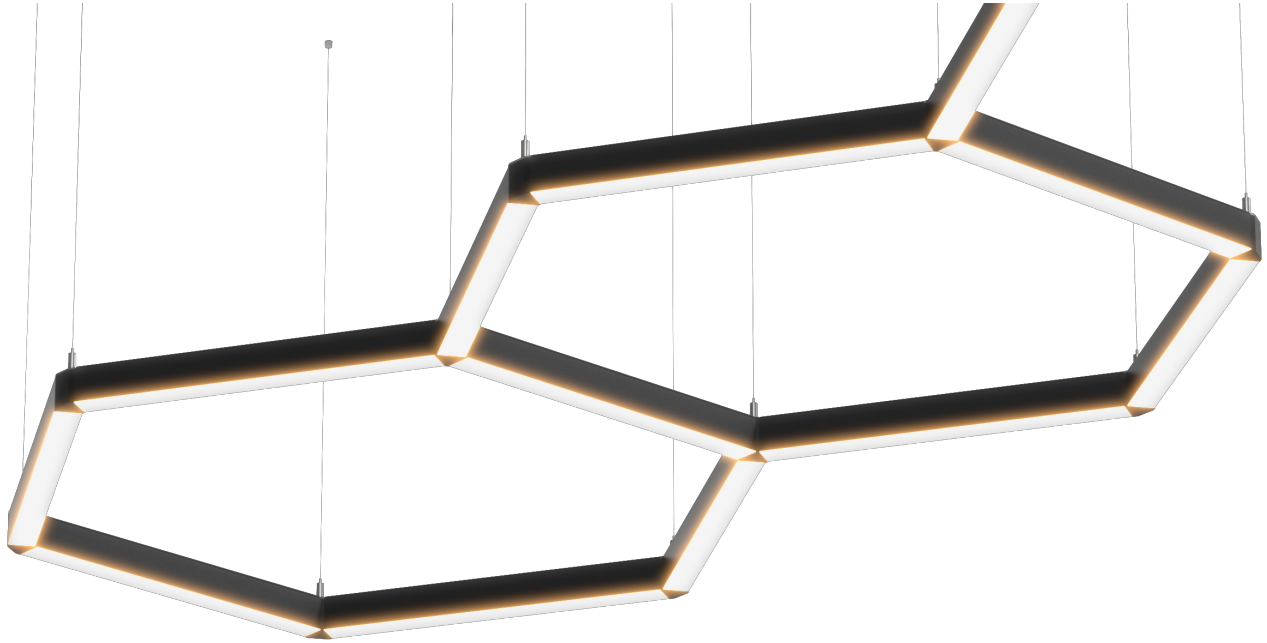
11	L 564-16W
12	L 844-24W
13	L1124-32W
14	L1404-40W
15	L1684-48W
16	L1964-56W
17	L2244-64W

Maximum Output

21	L 564-25W
22	L 844-38W
23	L1124-50W
24	L1404-63W
25	L1684-75W
26	L1964-88W
27	L2244-100W

HIGH/LOW SYSTEM

PROFESSIONAL SURFACE & PENDANT LUMINAIRES



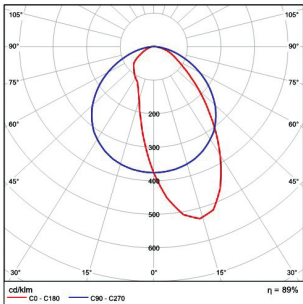
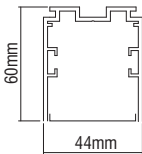
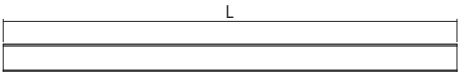
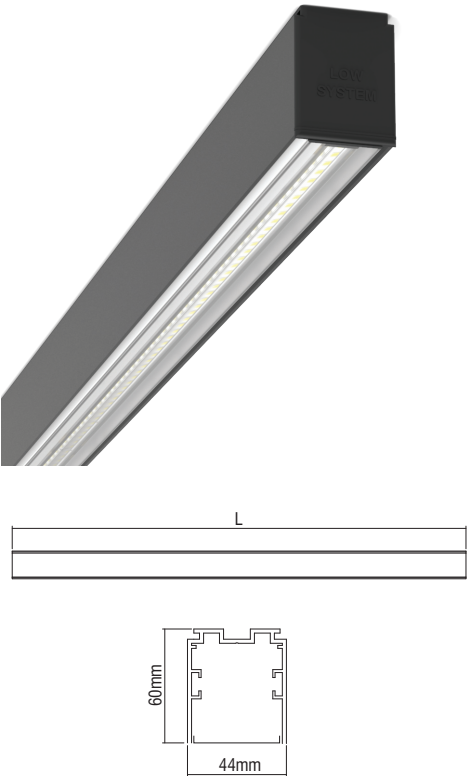
HIGH/LOW SYSTEM

PROFESSIONAL SURFACE & PENDANT LUMINAIRES



HIGH/LOW SYSTEM

LOW SYSTEM LED AS



PROFESSIONAL SURFACE & PENDANT LUMINAIRES



- Aluminium body.
- Removable plastic heads.
- High efficient asymmetric lens from PMMA.
- Flow recuperator in white colour.
- Suspension and power supply not included.
- CRI: min. 80 / SDCM: 3
- Luminous Efficacy:
203 Lm/Watt at 4000K 300mA
192 Lm/Watt at 3000K 300mA

Code	Description	L	Kg
97673	Low System Led AS 15W Neutral	595	1,300
97674	Low System Led AS 23W Neutral	875	1,600
97675	Low System Led AS 30W Neutral	1155	2,200
97676	Low System Led AS 38W Neutral	1435	2,600
97677	Low System Led AS 15W Warm	595	1,300
97678	Low System Led AS 23W Warm	875	1,600
97679	Low System Led AS 30W Warm	1155	2,200
97680	Low System Led AS 38W Warm	1435	2,600

For dimmer version add letter “D” at the end of product code.

Colour Codes:

0

 Colours

1

 White

2

 Titan

3

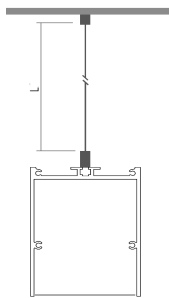
 Black

5

 matt Alum.

HIGH/LOW SYSTEM

SINGLE ADJUSTABLE SUSPENSION



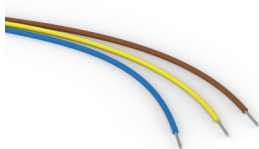
POWER SUPPLY



POWER SUPPLY



CABLE CONNECTIONS



Colour Codes:

0 Colours 1 White 2 Titan 3 Black 5 matt Alum.

PROFESSIONAL SURFACE & PENDANT LUMINAIRES



- Stainless steel cable and regulators.

- **Required:**

2 pieces for up to 3m profile.

Code	Description	L	Kg
900111	Single Suspension	500	0,050
900112	Single Suspension	1000	0,100
900113	Single Suspension	1500	0,150
900114	Single Suspension	2000	0,200
900116	Single Suspension	3000	0,300



- Plastic body.

- With transparent cable 3x0,75mm² or 5x0,50mm² for dimmer.

Code	Description	L	Kg
900122	Power Supply 3x0,75mm ² with Rosette Ø75	1000	0,120
900124	Power Supply 3x0,75mm ² with Rosette Ø75	2000	0,240
900126	Power Supply 3x0,75mm ² with Rosette Ø75	3000	0,360
900127	Power Supply 3x0,75mm ² with Rosette Ø75	4000	0,500
900162	Power Supply 5x0,50mm ² with Rosette Ø75	1000	0,120
900164	Power Supply 5x0,50mm ² with Rosette Ø75	2000	0,240
900166	Power Supply 5x0,50mm ² with Rosette Ø75	3000	0,360
900167	Power Supply 5x0,50mm ² with Rosette Ø75	4000	0,500



- For pendant use.

- Rosette from aluminium profile with 2m transparent cable 3x0,75mm² or 5x0,50mm² for dimmer or emergency versions in square or round version.

Code	Description	Kg
90042	Power Supply 3x0,75mm ² L 2m Ø80	0,130
90043	Power Supply 3x0,75mm ² L 2m Ø70	0,130
90044	Power Supply 3x0,75mm ² L 2m 80x80	0,210
90045	Power Supply 3x0,75mm ² L 2m 70x70	0,200
90048	Power Supply 5x0,50mm ² L 2m Ø100	0,250
90049	Power Supply 5x0,50mm ² L 2m 100x100	0,300



- PTFE cable connenctions.

- 3pole for standard version and 5pole for dimmer.

Code	Description	L	Kg
996510	Cable connections 3x0,75mm ² /m		0,200
996511	Cable connections 3x0,75mm ²	1500	0,280
996512	Cable connections 3x0,75mm ²	2500	0,380
996520	Cable connections 5x0,75mm ² /m		0,230
996521	Cable connections 5x0,75mm ²	1500	0,300
996522	Cable connections 5x0,75mm ²	2500	0,440

HIGH/LOW SYSTEM

PROFESSIONAL SURFACE & PENDANT LUMINAIRES

