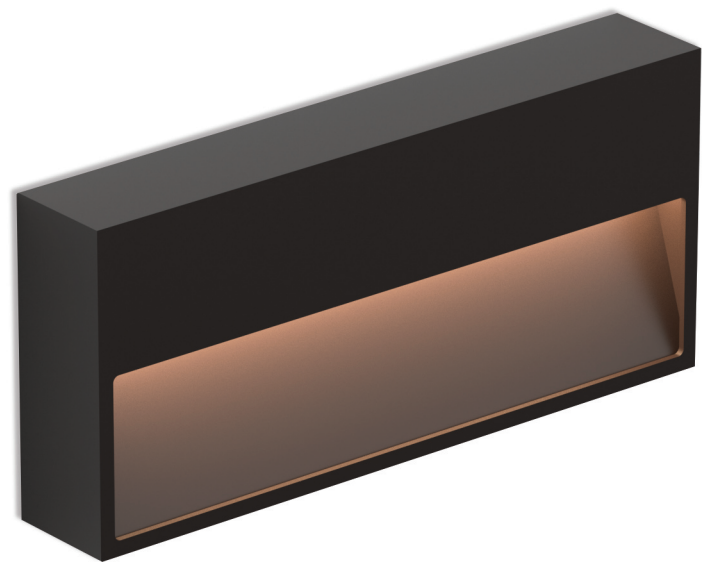


NEST IP54/ NEST IP65

OUTDOOR



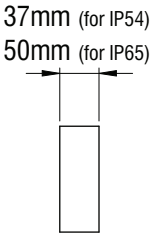
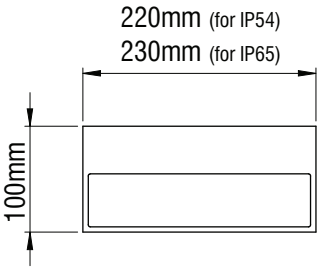
NEST IP54 and NEST IP65 is a surface mounted luminaire, with plain and accurate design, for outdoor applications.

Technical Features

- Aluminium body, painted electrostatically in selected colour.
- PMMA cover (for IP54 version).
- Pure light without IR/UV radiation.
- Operation life: 50,000 hours with efficiency > 80% of the initial luminous flux (L80B10).
- Connection for operation on 230V/50Hz.



- Aluminium body, painted electrostatically in selected colour.
- Driver 24V DC included.
- CRI: min. 80 / SDCM: 3
- Luminous Efficacy (for IP54 version):
110 Lm/W at 4000 K
107 Lm/W at 3000 K
- Luminous Efficacy (for IP65 version):
54 Lm/W at 4000 K
53 Lm/W at 3000 K



Code	Description	Kg
85801	NEST IP54 5W Warm	0,500
85802	NEST IP54 5W Neutral	0,500
85805	NEST IP65 7W Warm	0,600
85806	NEST IP65 7W Neutral	0,600

Colour Codes:			
0	Colours	1	White
2	Titan	3	Black